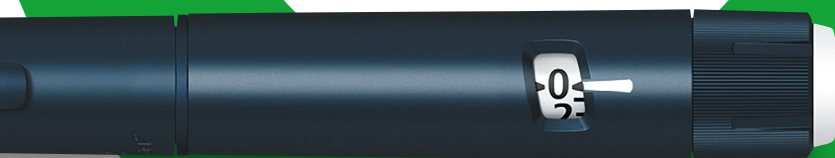


PenCycle<sup>®</sup> You return it  
We recycle it

Your pre-filled  
Novo Nordisk pens  
can now be recycled!



**Reporting of side effects**

If you get any side effects, talk to your doctor, pharmacist or nurse. This includes any possible side effects not listed in the package leaflet. You can also report side effects directly via the Yellow Card Scheme at <https://yellowcard.mhra.gov.uk/>. Side effects should also be reported to Novo Nordisk Limited (Telephone Novo Nordisk Customer Care Centre 0800 023 2573). Calls may be monitored for training purposes. By reporting side effects, you can help provide more information on the safety of this medicine.

**This introductory leaflet has been produced and funded by Novo Nordisk and is intended only for UK patients who are prescribed pre-filled Novo Nordisk pens for diabetes or weight management. This material is designed to be viewed digitally. It contains hyperlinks which are viewable online only.**

**Brought to you by:**



# Welcome to PenCycle<sup>®</sup>, a recycling initiative for people who use pre-filled Novo Nordisk pens.

We are asking you to return your empty, pre-filled Novo Nordisk pens so we can **give them new purpose** by recycling them into useful new products.

This leaflet contains all the information you need to start **PenCycling** today.

These are not real patients and  
are for illustrative purposes only.



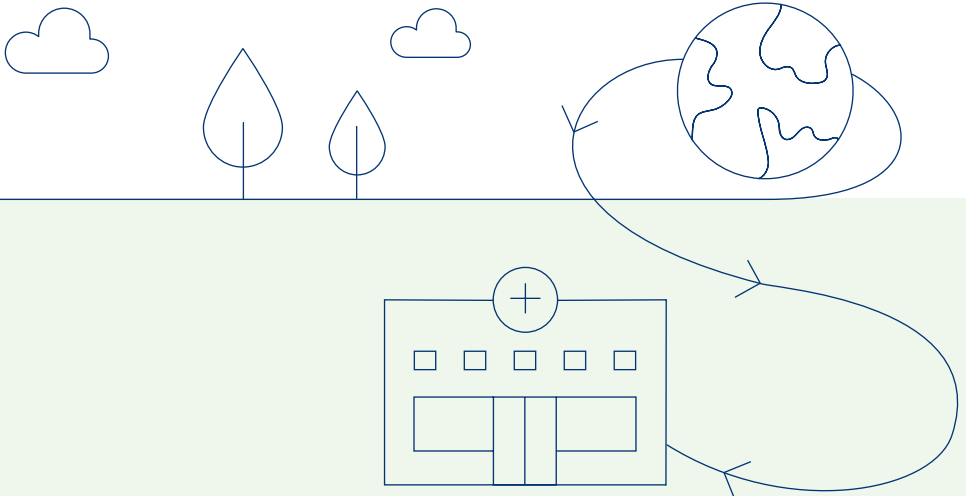


## How can I PenCycle®?

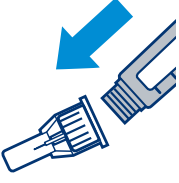
Returning your used pens could not be simpler and is completely free of charge.


To get started, pick up a PenCycle® return box from your nearest participating pharmacy. Alternatively, you can order some online on our website (where you can also search for participating pharmacies):

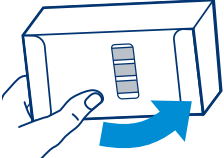
[www.pen-cycle.co.uk](http://www.pen-cycle.co.uk)





Then, follow these **3 simple steps:**

**1**  **Remove the needle** from your empty, pre-filled Novo Nordisk pen and dispose of the needle safely using a sharps bin (**do not put the needle in the PenCycle® return box**)

**2**  Push your empty pen through the hole

**3**  When the return box is full, either return it to your nearest participating pharmacy or mail it back to us free of charge

 Please always make sure your pre-filled Novo Nordisk pen is **empty** before you put it in the box.

 **Removing the needle** from your empty pen before you put your pen in the return box is really important – **your pen cannot be recycled if the needle is still attached.**

Always dispose of the needle immediately after each injection using a sharps bin. Never store your pen with the needle attached. Keep your sharps bin in a safe place so it's not a risk to other people and is out of the sight and reach of children. Sharps bins must not be disposed of in household waste. Discuss with your healthcare professional the procedure for disposing of sharps bin in your area.

**10** Your PenCycle® return box can hold **approximately 10 pens.**



## Where can I PenCycle®?

You can drop off your full return box at any participating pharmacy. You can find your nearest participating pharmacies by having a look on our website:

[www.pen-cycle.co.uk](http://www.pen-cycle.co.uk)

If you can't make it to a pharmacy, don't worry! Every return box has a FreePost Royal Mail barcode on the back, so you can mail them back to us free of charge.

**Please note:** Pharmacies in certain parts of the UK (for example, the Scottish Highlands & Islands) are not able to accept return boxes due to current regulations, but you can mail them back to us from anywhere in the UK.





## Why PenCycle®?

At **Novo Nordisk**, we're committed to environmental change. We have ambitious targets as part of our "**Circular for Zero**" initiative, including:



Using **100%** renewable energy across our global production (which we have already achieved)



Re-designing both our existing and future products to reduce our waste



Working together with our supply partners to make our processes more environmentally friendly

And, now, we want to make an even bigger difference by recycling empty, pre-filled Novo Nordisk pens.

In 2023, in the UK alone, **almost 25 million** injection pens were distributed, resulting in 420 tonnes of plastic waste. This is not sustainable. At **Novo Nordisk**, we want to play our part in fixing this.

**circular**  
FOR **zero**

**25**  
**million**  
empty pens going  
to waste



We have developed a **new, innovative process** that lets us recycle our pre-filled pens after use.

Pre-filled Novo Nordisk pens contain medicine and are with pen users wherever they go. Because of this, they are made from high-quality, long-lasting materials that are too good to waste. By finding new ways to reuse them, we can help put an end to the unsustainable use of earth's natural resources.

But we can't do this without you.

**You return it, we recycle it.**

# Frequently asked questions

## Who is behind PenCycle®?

**Novo Nordisk** are a global healthcare company, founded in Denmark in 1923. Our purpose at **Novo Nordisk** is to defeat diabetes, obesity, rare blood and hormone disorders, to improve the lives of millions of people.

Everything we do is based on acting socially, environmentally and financially responsibly with planned zero environmental impact. We call this “**Circular for Zero**”.

## Where can I see if the pen I am using is from Novo Nordisk?

This information can be found on the label of your pen. If you're unsure, you can always ask at the pharmacy.

## How can I tell if my Novo Nordisk pen is pre-filled?

Pre-filled Novo Nordisk pens are all made from plastic. If you're unsure, you can always ask at the pharmacy.

## Can I return other medical devices with my pre-filled Novo Nordisk pens as part of PenCycle®?

Other medical devices, for example insulin vials, insulin pumps and pens from other companies, cannot currently be recycled as part of **PenCycle®**, but our goal is to find an industry-wide solution. Currently, only pre-filled Novo Nordisk pens can be returned to us in the supplied, dedicated **PenCycle® return box**. You can pick one of these up from a participating pharmacy, or order some on our website: [www.pen-cycle.co.uk](http://www.pen-cycle.co.uk)

## Can I return my pens anywhere in the UK?

Yes, you can return your empty, pre-filled Novo Nordisk pens if you live within the devolved nations of the UK (England, Wales, Scotland and Northern Ireland).

Your local pharmacy will be able to confirm if they are participating in the initiative and can accept your empty pens. If not, your return box can be posted via Royal Mail, free of charge.

## Can I drop off my empty, pre-filled Novo Nordisk pens at any pharmacy?

You can drop off empty pre-filled Novo Nordisk pens in a return box at any **participating** pharmacy. To find your nearest participating pharmacy, please check our website: [www.pen-cycle.co.uk](http://www.pen-cycle.co.uk)

## Can I return my empty, pre-filled Novo Nordisk pens to my GP or hospital clinic?

No, pens can only be recycled through the **PenCycle**<sup>®</sup> initiative. **PenCycle**<sup>®</sup> will use existing logistics routes to minimise the environmental impact, and GP surgeries, secondary care clinics and hospital clinics are not currently part of these routes.

## How will I know my pen will not be wasted?

Every empty, pre-filled Novo Nordisk pen that is returned to us will be sent back to a specialist facility in Denmark to be recycled. This process will use existing logistics routes to minimise the environmental impact. Every shipment of pens will be tracked and recorded to make sure none of them end up in landfill or incinerated.

## What will happen to the pens I return?

Every pre-filled Novo Nordisk pen returned to us through **PenCycle**<sup>®</sup> will be recycled into useful new products, giving them new purpose.

- The plastic has gone into new furniture
- The glass has been repurposed into lamps

Novo Nordisk will not be selling or profiting from the products made.



## Why is PenCycling better than my regular disposal route?

Usually, empty medical devices like pre-filled Novo Nordisk pens are sent to landfill or destroyed as hazardous waste through incineration. The plastic in these pens is not biodegradable, so it could lie in landfill for hundreds of years. Incineration uses a lot of energy, produces gases that are harmful to the environment and also leaves some plastic waste behind. By **PenCycling**, you are making sure your pen is repurposed to create useful new products rather than going to waste.

## Can the return boxes be recycled?

Yes. They are recyclable and are being recycled in Denmark after opening and emptying.

# PenCycle®

Returning your pre-filled Novo Nordisk pens only takes a few minutes but will have an impact that lasts years.

Together, we can give these empty pens new purpose.

## Contact us

If you have any questions at all, or would like more information about **PenCycle®**, please visit:

[www.pen-cycle.co.uk](http://www.pen-cycle.co.uk) ↗

This material is produced and funded by Novo Nordisk Limited, with registered offices at 3 City Place, Beehive Ring Road, Gatwick, West Sussex, RH6 0PA.

PenCycle® and Novo Nordisk® are trademarks owned by Novo Nordisk A/S.

This material is the intellectual property of Novo Nordisk and should not be placed on third-party websites. Novo Nordisk has a responsibility for ensuring that all its materials reflect the most current information.

